

2MP 30x IR Network PTZ Dome Camera



NEXLEN SOLE DISTRIBUTION
Better Ideas. Better Life. **3 YEAR WARRANTY**

- 30X Optical Zoom
- Video Analytic
- H.265
- 100m Smart IR
- Defog
- 150m PoE Distance
- Pixel Analytic
- Extreme Weather
- IP66
- Surge Protection

KEY FEATURES

30X Optical Zoom – Fast focus, accurate, lock monitoring target quickly.



Smart IR illuminators to assist capturing objects in the dark even under **0 lux**, up to 328 feet (100 m) away.



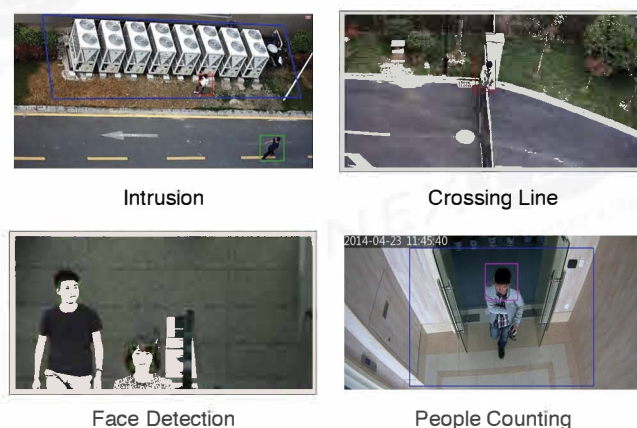
H.265 – Get **50% Reduction** on storage, bandwidth & bitrate with same image quality compared to H.264.

Pixel Analytic Technology

Pixel Shutter Speed Control



Video Analytic – Behavior Detection (Intrusion & Crossing Line), Intelligent Identification (Face Detection) and Statistical Analysis (People Counting).



SPECIFICATIONS

	IPC6222ER-X30(P)-B	IPC6222ER-X30(P)-B	
Camera		Network	
Sensor	1/3", 2 megapixel, progressive scan, CMOS	Protocols	L2TP, IPv4, IGMP, ICMP, ARP, TCP, UDP, DHCP, PPPoE, RTP, RTSP, RTCP, DNS, DDNS, NTP, FTP, UPnP, HTTP, HTTPS, SMTP, SIP, 802.1x
Lens	4.5 ~ 135 mm (30x optical zoom)	Compatible Integration	ONVIF, API
Angle of View (H)	62.9° (wide) ~ 2.3° (tele)	Pan & Tilt	
Iris	Auto/Manual; F1.6 ~ F4.4	Pan Range	360° (endless)
Shutter	Auto/Manual; shutter time: 1/6 s ~ 1/8,000 s	Pan Speed	0.1°/s ~ 240°/s Preset speed: 300°/s
Min. Illumination	Colour: 0.03 lux (F1.6, AGC ON) 0 lux with IR	Tilt Range	-15° ~ +90° (auto reverse)
S/N	>52 dB	Tilt Speed	0.1° ~ 160°/s Preset speed: 240°/s
Day/Night	IR-cut filter with auto switch (ICR)	Number of Preset	256
WDR	Digital WDR	Patrol	Up to 16 patrols, up to 32 presets per patrol Note: The total number of patrols and patterns is 16.
Video		Pattern	Up to 16 patterns, with the total recording time not less 15 minutes per pattern
Max. Resolution	1920 x 1080	Interface	
Video Compression	H.265, H.264, MJPEG	Audio I/O	Audio output: Audio cable Input: impedance 35 kΩ; amplitude 2 V [p-p] Output: impedance 600 Ω; amplitude 2 V [p-p]
Frame Rate	1080P (1920x1080): Max.30 fps; 720P (1280x720): Max.30 fps; D1 (720x576): Max.25 fps	Alarm I/O	1 / 1
Video Streaming	Triple	Network	1 RJ45 10M/100M Base-TX Ethernet
OSD	Up to 8 OSDs	General	
Privacy Mask	Up to 4 areas	Power	24 V AC, 24 V DC, PoE (PSE Required) Power consumption: 9 ~ 42W
Digital Zoom	Supported	Dimensions (Ø x H)	Ø227 x 359.4 mm (Ø8.9" x 14.2")
HLC	Supported	Weight	5.28 kg (11.6 lb)
Smart		Working Environment	-40°C ~ +65°C (-40°F ~ 149°F), Humidity ≤ 90% RH d(non-condensing)
Behavior Detection	Intrusion, crossing line, motion detection	Ingress Protection	IP66
Exception Detection	Audio detection		
Intelligent Identification	Face detection		
Statistical Analysis	People counting		
Audio			
Audio Compression	G.711		
Two-way audio	Supported		
Storage			
Edge Storage	Micro SD, up to 128 GB		

BRACKETS

